



OAKFIELD



Upperton Road, Eastbourne

Asking Price £200,000



Upperton Road, Eastbourne

This large two bed flat in Eastbourne is a real gem with bags of potential! The property boasts an incredibly spacious layout, with two large bedrooms, a generously sized living area, and a balcony perfect for enjoying the beautiful Eastbourne weather. The flat also comes with its own garage and has a share of the freehold.

You enter the flat through the large hallway that leads straight into the kitchen and living space to the right. The Living room has a double glazed door which lead out onto the balcony that has beautiful tree lined views and the downs to your left. Both bedrooms are good sizes with the main benefiting from a en-suite. With Eastbourne town centre only a short walk and the seafront not much further... this flat has everything.

Internal viewings highly recommended.





Living Room

15'3" x 13'11" (4.66 x 4.26)

Kitchen

14'4" x 6'0" (4.39 x 1.83)

Bedroom One

13'10" x 12'6" (4.22 x 3.82)

Bedroom Two

13'10" x 8'9" (4.22 x 2.69)

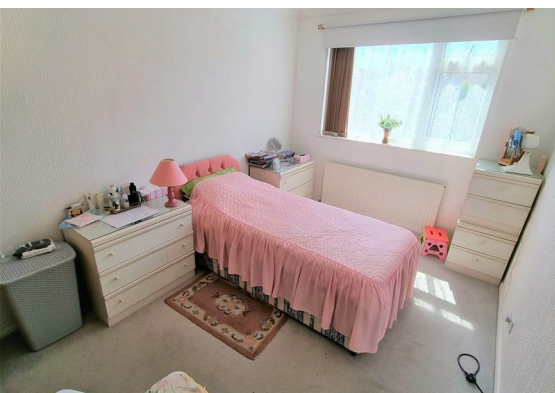
Bathroom

8'10" x 4'11" (2.70 x 1.50)

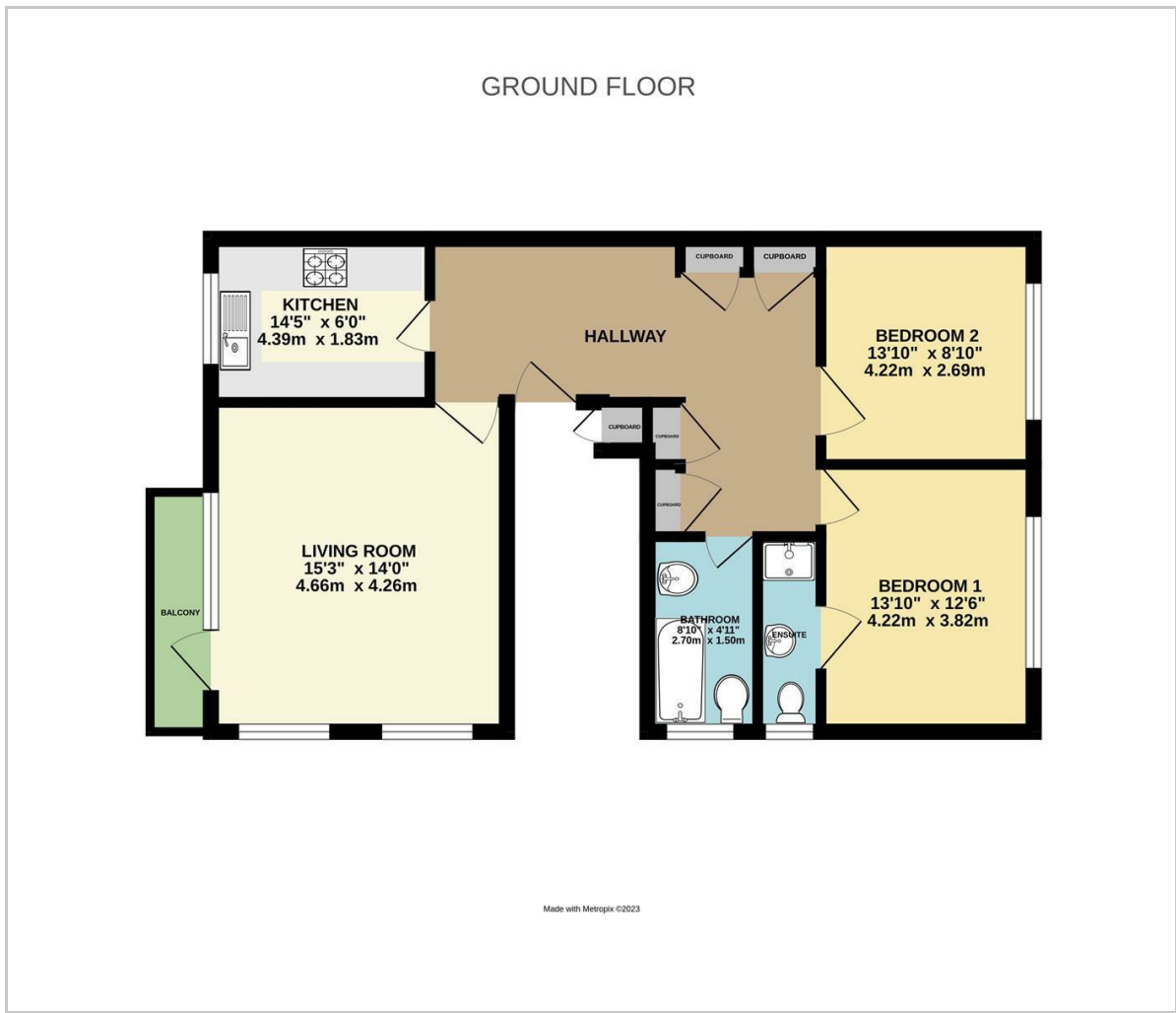
Council tax band - B

Lease Details

There is approximately 70 years remaining on the lease from 2023 but does have a share in the freehold. The monthly service charge is £110. The agent has not had sight of confirmation documents and therefore the buyer is advised to obtain verification from their solicitor or surveyor.



Floor Plan



Viewing

Please contact us on 01323 723 500
if you wish to arrange a viewing appointment for this property or require further information.

Area Map



Energy Efficiency Graph

